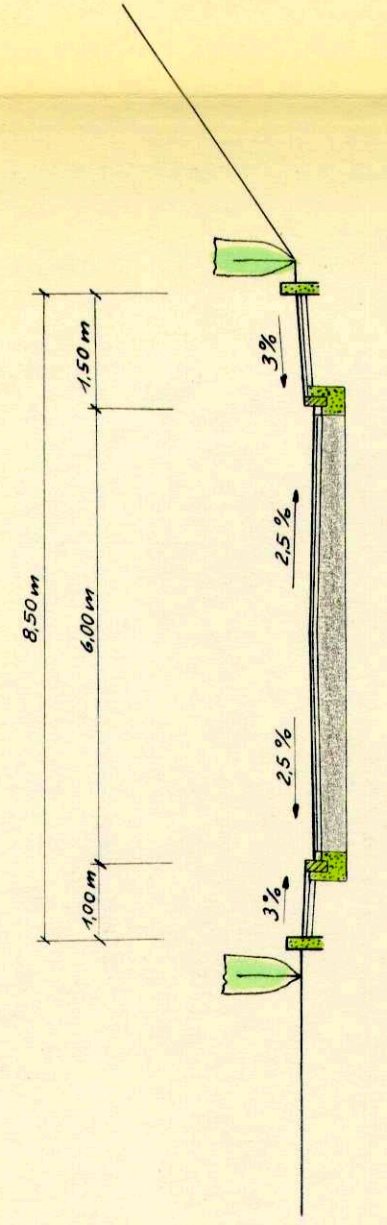
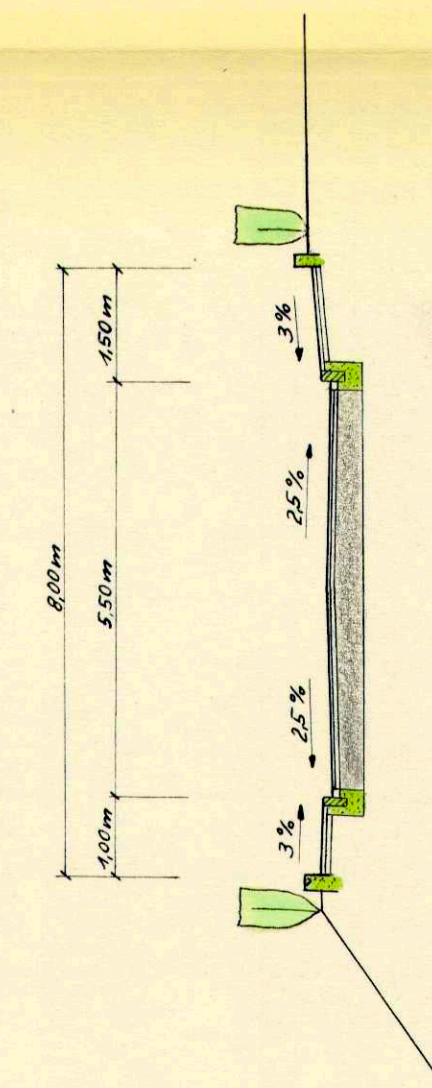


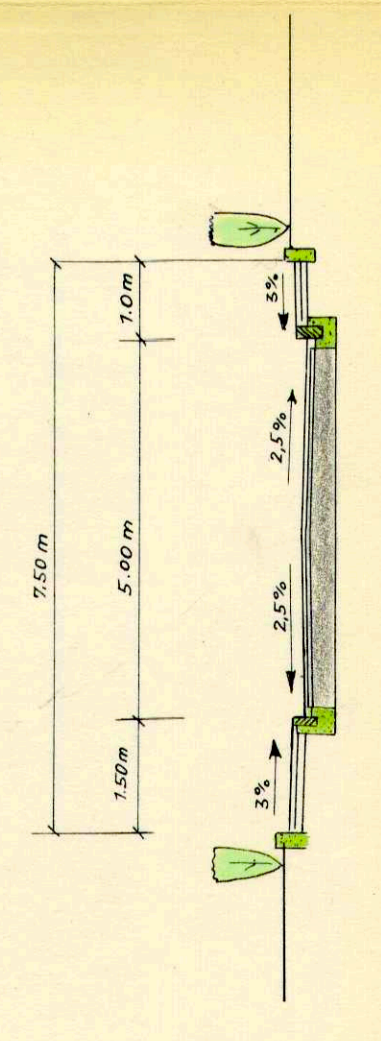
Straße O1-O2-P-V-W-X-Y-Z



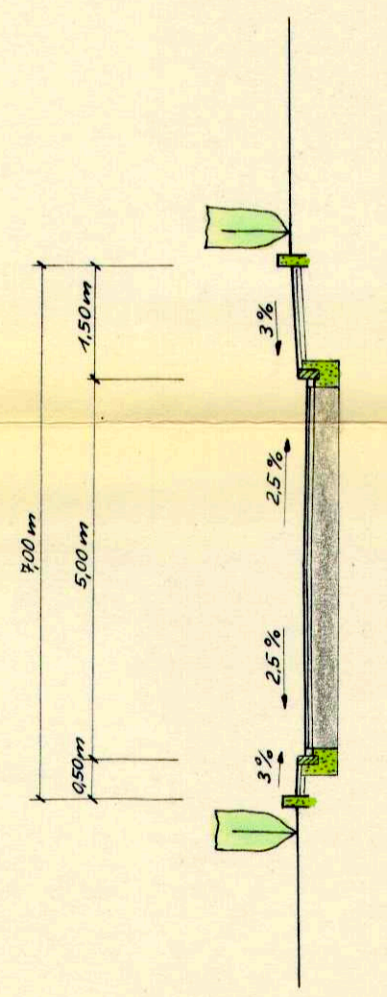
Straße P-Q-R-S-T-U



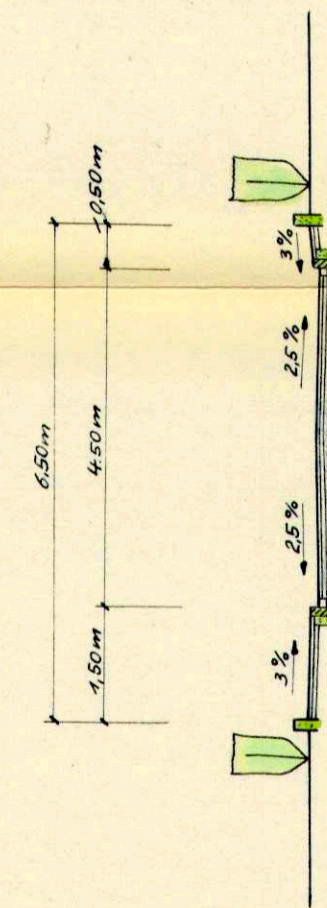
Straße Q-O1



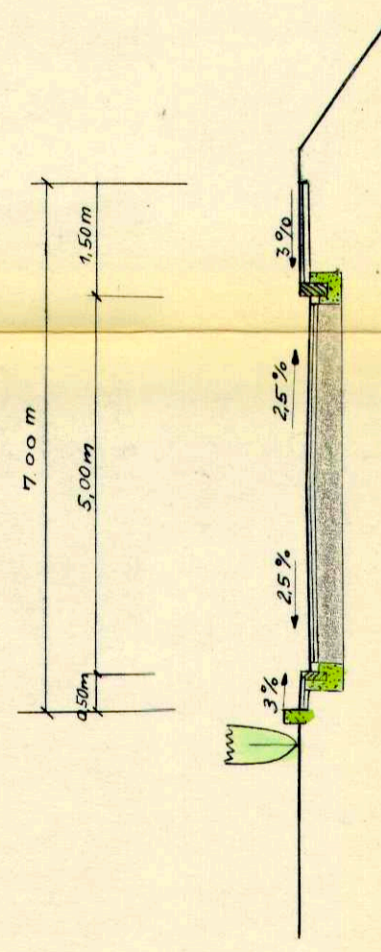
Straße V-Q



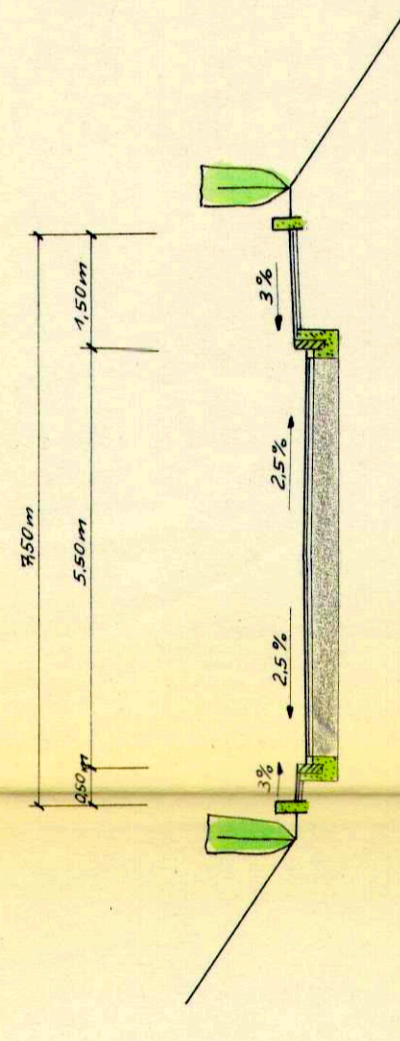
Straße R-W, S-X, T-Y u. U-Z



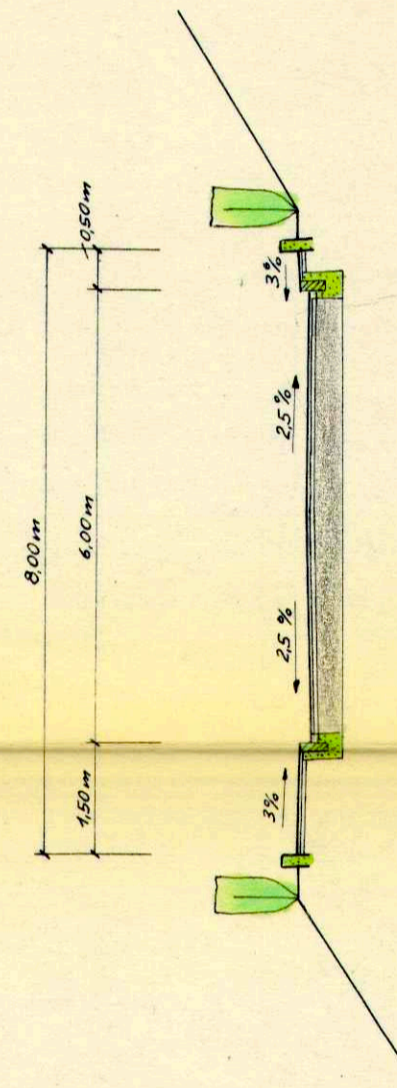
Straße O2-A



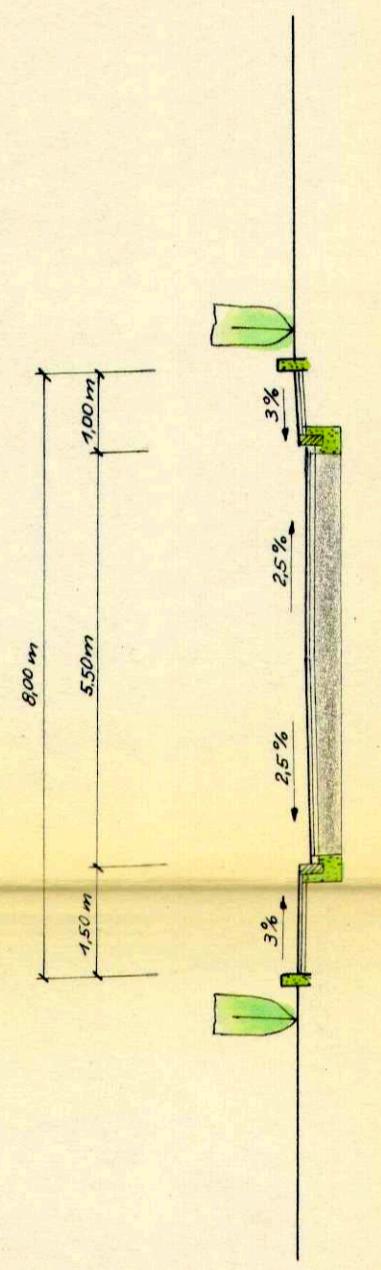
Straße A-A1-B1-B2 u. B-D1



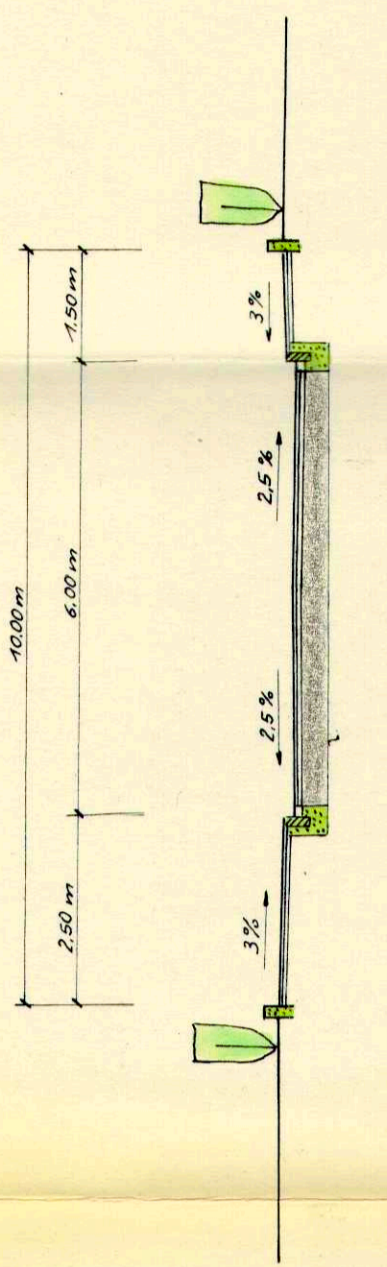
Straße K-K1-C-E-F-G-H-D



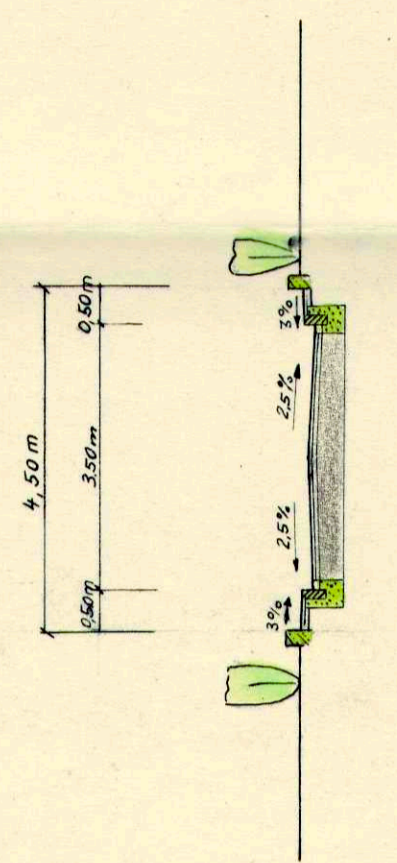
Straße D-D1



Straße C-B



Straße E-E1-F-F1 u. G-G1



Stadt Engen

ANLAGE 9 FERTIGUNG 1
ZUM ANTRAG VOM 11.6.1965 GEBÖRIG

Teilbebauungsplan
Unterer u. oberer Weihergrund
Vögtleshalde
Straßenentwurf
Regelquerschnitte
M 1:100

Konstanz, den 14.5.1965
Der Planfertiger:
ARNOLD
PREMIER-ARCHITECT
BLANDENHOFSTRASSE 114
D-7800 KONSTANZ

